

# Radford and Park

## Area Committee Report

Unofficial June 2013 Data

# Ward Priorities 2013

Theme	Priorities	Key Actions	Outcome	Lead
<b>Safer</b>	<p>Reduce ASB in neighbourhoods</p> <p>Build confidence and trust</p> <p>Reducing burglaries</p> <p>Reduce street drinking – St Peter's</p>	<p>Visible presence across Beat areas Operation Country/ Neighbourhood watch</p> <p>Weeks of Action / Student Weeks of Action</p> <p>Alcohol Exclusion Zone</p> <p>Develop St Peter's Action plan</p>	<p>Increased levels of reporting</p> <p>Reduced levels of crime and ASB and reducing fear of crime / perceptions of crime</p> <p>Increased resident participation</p> <p>Improved confidence and support towards local agencies</p>	<p>Police</p> <p>Community Protection</p> <p>Universities</p>
<b>Neighbourhoods</b>	<p>Managing waste, flytipping, bins, alleys</p> <p>Tackle scrap dealing</p> <p>Derelict sites</p> <p>Continue to develop resident groups</p>	<p>Targeted work around grot spots</p> <p>Regeneration activity around Radford Mill / John Carroll Leisure Centre</p> <p>Active residents in each Beat area</p>	<p>Improved cleanliness – increase local pride – reduced number of problem sites with partnership approach to solutions</p> <p>Transformation of neighbourhoods and improved physical infrastructure</p> <p>Community cohesion</p>	<p>Locality Management</p> <p>NCH, Parks</p> <p>Economic Regeneration</p>
<b>Families</b>	<p>Continue to strengthen offer for children and young people</p>	<p>Sustain Radford Girls Football and Radford Youth Group</p> <p>Identify new venues for older youth</p>	<p>Families will be healthier, fitter and emotionally resilient with an enjoyable and safe place for children to grow up</p>	<p>Police / NFFC</p> <p>Children and Families</p>

# Ward Priorities 2013

Theme	Priorities	Key Actions	Outcome	Lead
<b>Health</b>	Healthy eating Community spaces	Groundworks Greater Nottingham allotments project and teaching garden  Promoting emerging venues for community events and activities (eg Health events at John Carroll Leisure Centre)	Improved health and wellbeing, improved participation levels	Decage of Better Health  Locality Management
<b>Working</b>	Apprenticeships, training, volunteering and employment opportunities	University of Nottingham Apprenticeship Programme  Support local older generation – basic IT skills (to be developed)	More local residents accessing employment and training opportunities, enhanced skills and qualifications	Employment and Skills Team / NDO's

# Community Engagement

## Ward Walks

Area/Estate	Date/Time	Meeting Point
Lenton Triangle	12 September (2.30pm)	Derby Road / Kimbolton Avenue
Radford West	10 October (2.30pm)	Hartley Road / Addington Street
Leen	14 November (2.30pm)	Hartley Road / Forster Street

## Community Meetings

Group	Date	Venue
Radford and Leen Tenants and Residents Association	Third Tuesday at 6.45pm:- 17 September, 15 October, 19 November, 17 December	St Peter's Church, Hartley Road / Churchfield Lane, Radford
BRAMTRA (Bramcote estate tenants group)	5 September (6.00pm),	Plough Inn, St Peter's Street, Radford
Radford West Residents Group	10 September, 8 October, 12 November, 10 December (Meetings start at new time of 6pm)	Pine View Community Room (Ground Floor), Thev Woodlands, Radford

# Community Engagement

## Events Delivered

Event	Lead Partners	Date/Time	Venue
Chief Executive visit to Radford	Neighbourhood Services	21 May 9.30am - 11.30am	John Carroll Leisure Centre, Radford Mill, PRIMARY Arts studios
Radford High Rise consultation	Nottingham City Homes	5 June 2pm -5.45pm	John Carroll Leisure Centre, Denman Street East, Radford
Shiefton Youth Group and Supplementary school (awards ceremony)	Shiefton	29 June – all day	Radford Unity Complex, Ilkeston Road

## Future Events and Activities Planned

Event	Lead Partners	Date/Time	Venue
Radford Community Day	Radford and Mellers Primary Schools, Partnership Council, Neighbourhood Services	Saturday 21 September 11am-3pm	Radford Primary school, Norton Street, Radford
Woodlands Coffee morning	NCH	Friday 27 September 10am – 12noon	Woodlands
Student Week of Action	Neighbourhood Services, University of Nottingham, Nottingham Trent University, Community Cohesion	Monday 30 September – Friday 4 October	Targeted streets In student areas within each ward

# **Finance**

## **Ward Councillor Budgets**

**Total Amount allocated this period £3,150**

**Budget Remaining Unallocated £ tbc (inc of 2012-13 allocation)**

## **Area Capital Fund**

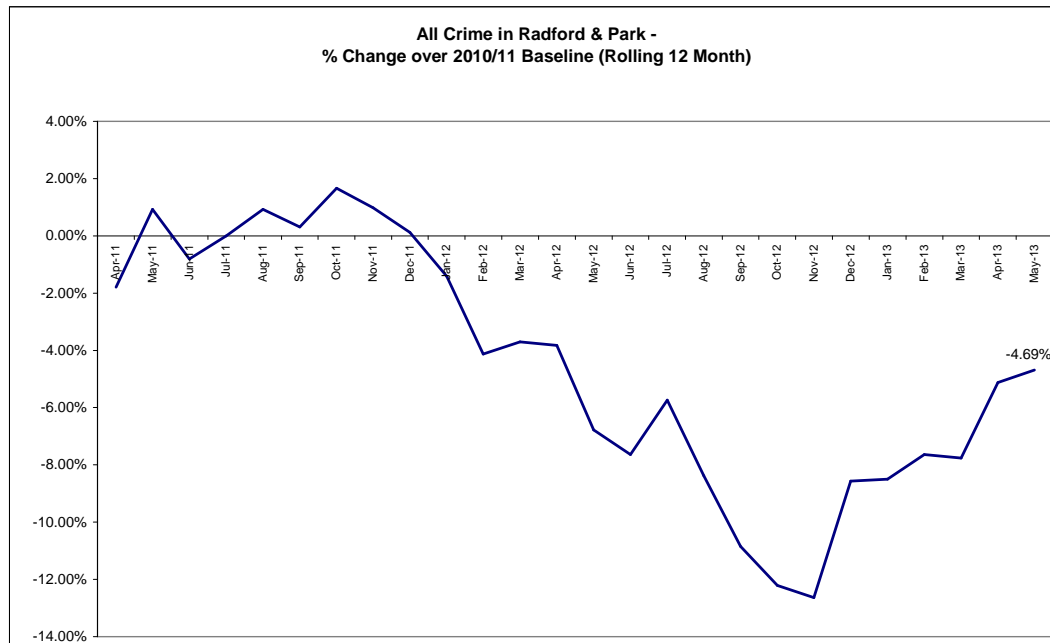
**Total Amount allocated this period £276,111**

**Budget Remaining Unallocated £252,880 (inc of 2012-13 allocation)**

## **Others – Section 106, NCH Environmentals, Other Funding**

**None this period**

# Crime



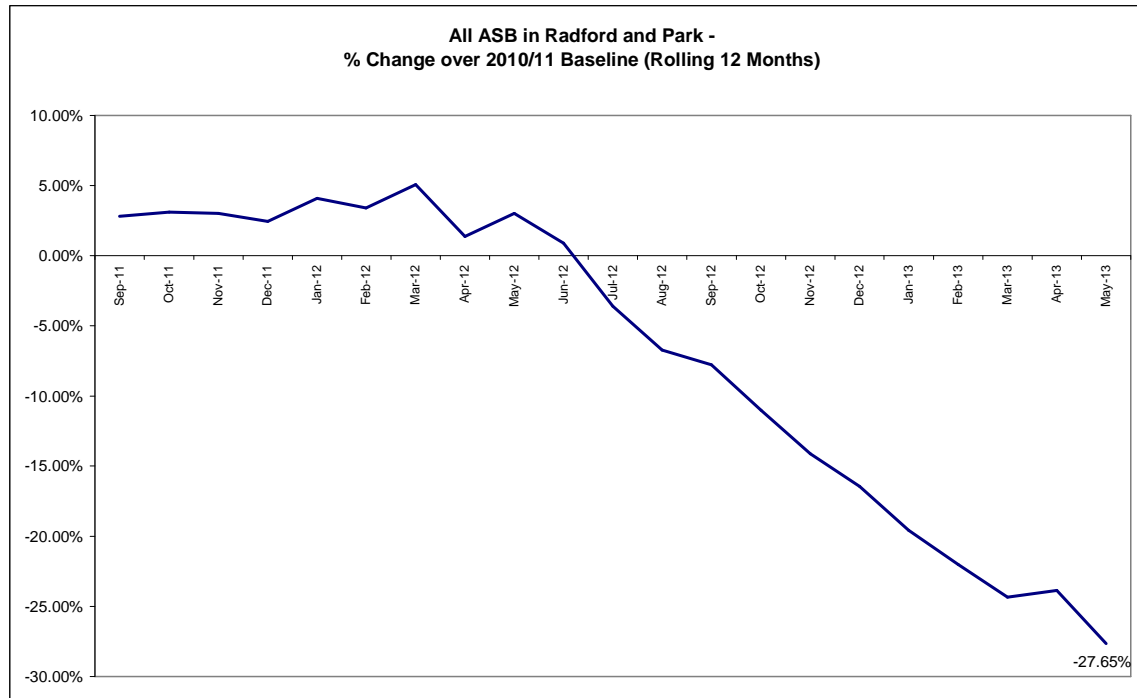
Red	7 more crimes	+6.19%
Amber		
Green*		

\*Refers to May 2013 compared to May 2012

- The above baseline graph compares the *rolling* 12 month total of crime in Radford and Park to a *fixed* 12 month 2010/11 baseline. The current 12 month total is showing a reduction of -4.69% against the baseline.
- In May 2013 there were 120 crimes which is an increase of +6.19% (7 crimes, see above RAG rating) compared to May 2012. The Division as a whole experienced an increase in all crime of *approximately* +4.3%.
- Year to date crime in the ward has increased by +21.93% (50 crimes, April – May 2013 compared to April – May 2012, see Table 1 of page 4). In the Division as a whole, all crime is up by *approximately* +6.1%.
- The largest volume increases this month were in Personal Robbery and Violence, which are both up 4 crimes (+200% and +33.33% respectively, see Table 1 of page 4).
- Crimes with a domestic flag assigned to them were up by 3 crimes (May 2013 compared to May 2012, see Table 2 of page 4). For May 2013 the ward ranked 12<sup>th</sup> out of the 20 wards in the Division for this type of crime.
- The rate (per 1000 of population) of all crime in Radford and Park is just worse than the average rate for the 20 wards (figures are year to date, see Table 3 of page 5).

*Unofficial data*

# All ASB



Red		
Amber		
Green*	39 fewer calls	-41.05%

\*Refers to May 2013 compared to May 2012

- The above baseline graph compares the *rolling* 12 month total of ASB in Radford and Park to a *fixed* 12 month 2010/11 baseline. Performance on this measure continues to improve.
- In May 2013 there were 56 ASB calls in the ward. This is a reduction of -41.05% (39 calls, see above right RAG rating) compared to May 2012. The Division as a whole experienced a reduction of *approximately* -30.6% on this measure.
- Year to date ASB in the ward has reduced by -21.66% (34 calls, April – May 2013 compared to April – May 2012, see Table 5 of page 6). In the Division as a whole, ASB is down by *approximately* -28.1%.
- The rate (per 1000 of population) of ASB in Radford and Park is better than the average rate for the 20 wards (May 2013 figures, see Table 4 of page 6).



# Crime Figures

Table 1: Crime Types by Month and Year to Date

Type	May-12	May-13	Change	% Change	Prev YTD	YTD	Change	% Change
Autocrime	30	24	-6	-20.00%	60	43	-17	-28.33%
Burglary	10	8	-2	-20.00%	23	35	12	52.17%
Burglary Other	0	12	12		2	31	29	1450.00%
Damage	18	9	-9	-50.00%	33	23	-10	-30.30%
Drugs	5	4	-1	-20.00%	10	9	-1	-10.00%
Fraud	1	0	-1	-100.00%	1	0	-1	-100.00%
Other	0	1	1		2	5	3	150.00%
Personal Robbery	2	6	4	200.00%	5	10	5	100.00%
Robbery Business	0	0	0		1	0	-1	-100.00%
Sexual	0	1	1		1	2	1	100.00%
Theft	33	35	2	6.06%	60	79	19	31.67%
Theft from Person	0	3	3		4	7	3	75.00%
Threats	2	1	-1	-50.00%	3	3	0	
Violence	12	16	4	33.33%	23	31	8	34.78%
<b>Grand Total</b>	<b>113</b>	<b>120</b>	<b>7</b>	<b>6.19%</b>	<b>228</b>	<b>278</b>	<b>50</b>	<b>21.93%</b>

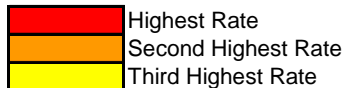
Table 2: Crimes with a Domestic Flag Assigned to them by Month

	May-12	Jun-12	Jul-12	Aug-12	Sep-12	Oct-12	Nov-12	Dec-12	Jan-13	Feb-13	Mar-13	Apr-13	May-13	Ward Rank (May-13)
<b>RADFORD &amp; PARK</b>	8	9	4	6	13	15	8	7	6	10	9	6	11	12

# Crime Figures

Table 3: Crime Types by Rate (per 1000 of population) of the 20 Wards – Figures are Year to Date 2013/14

WARD	ALL CRIME	AUTOCRIME	BURGLARY	DAMAGE	PERSONAL ROBBERY	THEFT	THEFT FROM PERSON	VIOLENCE
ARBORETUM	34.10	2.33	4.49	3.95	2.42	6.19	0.63	6.19
ASPLEY	23.27	1.65	1.70	3.69	0.28	3.40	0.17	6.70
BASFORD	17.46	2.41	1.60	3.02	0.19	3.33	0.06	4.07
BERRIDGE	22.14	2.68	1.82	3.16	0.32	5.42	0.59	4.45
BESTWOOD	16.65	1.07	1.31	4.18	0.30	1.97	0.12	4.30
BILBOROUGH	20.13	2.08	1.91	3.69	0.30	2.86	0.00	4.76
BRIDGE	21.94	1.44	0.92	2.15	0.10	8.61	0.51	4.31
BULWELL	26.37	1.86	1.30	5.08	0.68	6.81	0.37	5.20
BULWELL FOREST	18.66	1.32	1.18	2.94	0.73	6.02	0.15	3.31
CLIFTON NORTH	14.59	1.63	1.16	3.49	0.39	2.41	0.08	2.79
CLIFTON SOUTH	14.12	0.79	1.51	2.37	0.22	2.94	0.07	4.09
DALES	19.87	1.40	1.21	3.95	0.18	4.68	0.43	3.77
DUNKIRK & LENTON	26.10	4.85	4.03	2.75	0.37	6.32	0.46	2.84
LEEN VALLEY	18.87	0.65	1.96	3.55	0.37	5.14	0.19	3.64
MAPPERLEY	19.69	2.02	1.77	3.16	0.19	3.98	0.00	3.34
RADFORD & PARK	21.74	3.01	2.76	1.74	0.87	6.23	0.41	2.86
SHERWOOD	22.45	1.82	1.62	1.95	0.71	9.41	0.06	3.57
ST ANNS	22.98	2.15	1.29	3.94	1.58	2.15	0.36	6.01
WOLLATON EAST & LENTON ABBEY	12.76	1.00	1.41	1.41	0.00	4.82	0.00	1.41
WOLLATON WEST	12.21	1.42	1.56	1.63	0.00	3.60	0.20	1.29
<b>WARD AVERAGE</b>	<b>20.30</b>	<b>1.88</b>	<b>1.83</b>	<b>3.09</b>	<b>0.51</b>	<b>4.81</b>	<b>0.24</b>	<b>3.94</b>



# All ASB Figures

Table 4: All ASB by Rate (per 1000 of population) of the 20 Wards (Figures are May 2013)

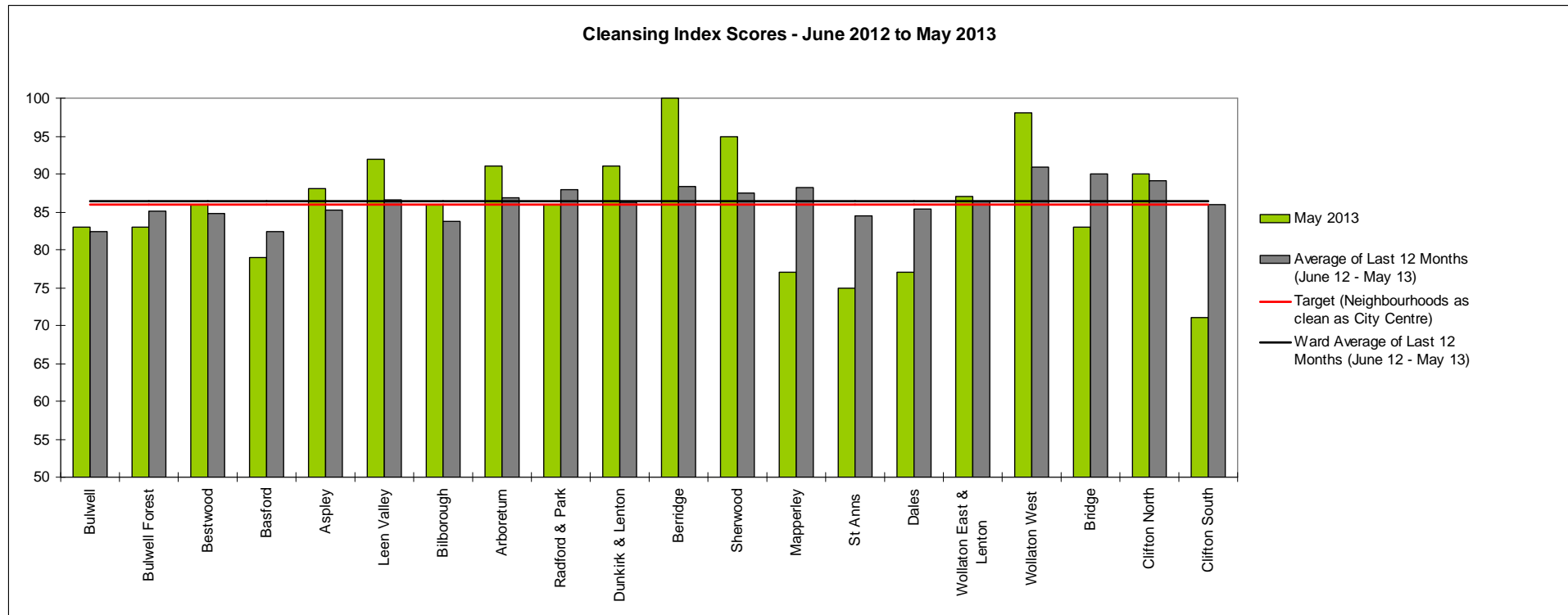
WARD	RATE (PER 1000 OF POP.) May 2013	
ARBORETUM	6.73	Highest Rate
ASPLEY	4.77	Third Highest Rate
BASFORD	2.78	
BERRIDGE	3.22	
BESTWOOD	4.24	
BILBOROUGH	3.93	
BRIDGE	3.69	
BULWELL	4.58	
BULWELL FOREST	3.16	
CLIFTON NORTH	3.26	
CLIFTON SOUTH	3.08	
DALES	3.77	
DUNKIRK & LENTON	1.92	
LEEN VALLEY	2.80	
MAPPERLEY	3.16	
RADFORD & PARK	2.86	
SHERWOOD	2.92	
ST ANNS	5.15	Second Highest Rate
WOLLATON EAST & LENTON ABBEY	1.91	
WOLLATON WEST	1.15	
<b>WARD AVERAGE</b>	<b>3.45</b>	

Table 5: All ASB by Month and Year to Date

	May-12	May-13	Change	% Change	Prev YTD	YTD	Change	% Change
<b>All ASB Total</b>	95	56	-39	-41.05%	157	123	-34	-21.66%

# Cleanliness Index

This graph shows the position of your ward compared to other Wards



**The “neighbourhood as clean as the city centre” benchmark target on cleanliness is to achieve a score of 86% in every ward. The 86% target is shown in red in the above graph.**

To calculate the Cleanliness Index (CI) an agreed number of transects are surveyed across an area covering a range of land types. Each site surveyed is awarded a cleanliness grade based on a 7 point scale from A to D where Grade A: – no litter, and Grade D: - heavily littered. The maximum possible score of 100 is achieved when all sites achieve Grade A.

The Code of Practice for Litter and Refuse (COPLAR) requires councils to strive to reach an ‘acceptable’ standard of cleanliness (grade B or better) across the Council area. Grade A is the ultimate goal and is how a site should be immediately after sweeping but is almost impossible to maintain for any length of time. For example, a grade A site is completely free of litter – one cigarette butt takes it down to B+.

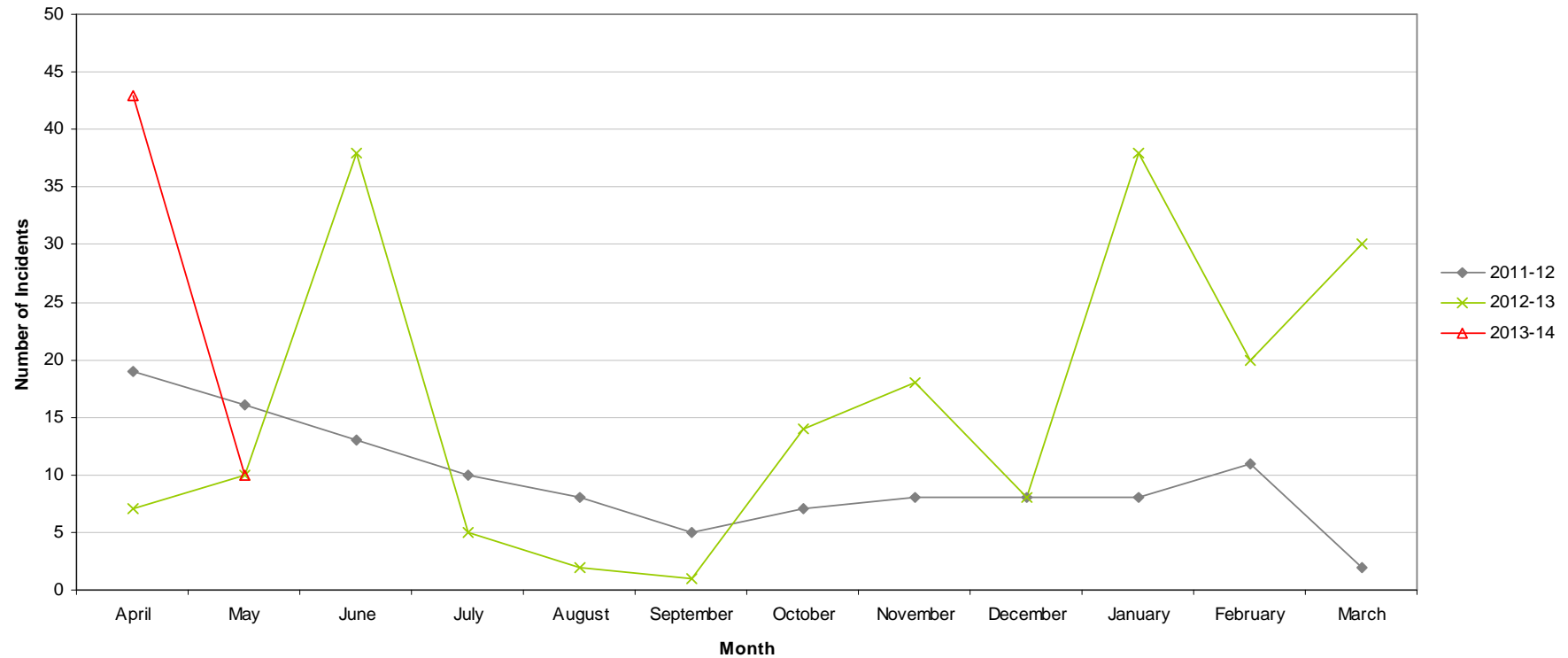
To achieve the manifesto commitment of Neighbourhoods as clean as the City Centre a target of 86 is required as that was the CI for the City Centre in May 2011. To give some context if all areas surveyed achieved a grade ‘B’ standard, this would equate to a cleanliness index of 67.

# Graffiti Reports

<b>RED</b>		
<b>AMBER</b>	<b>10 incidents</b>	<b>No change</b>
<b>GREEN</b>		

- All data refers to a comparison with the previous year's month
- It is proposed that performance over time graphs be used for each indicator
- Historic data for comparison is not available for dog fouling

Incidents of Graffiti - Radford & Park

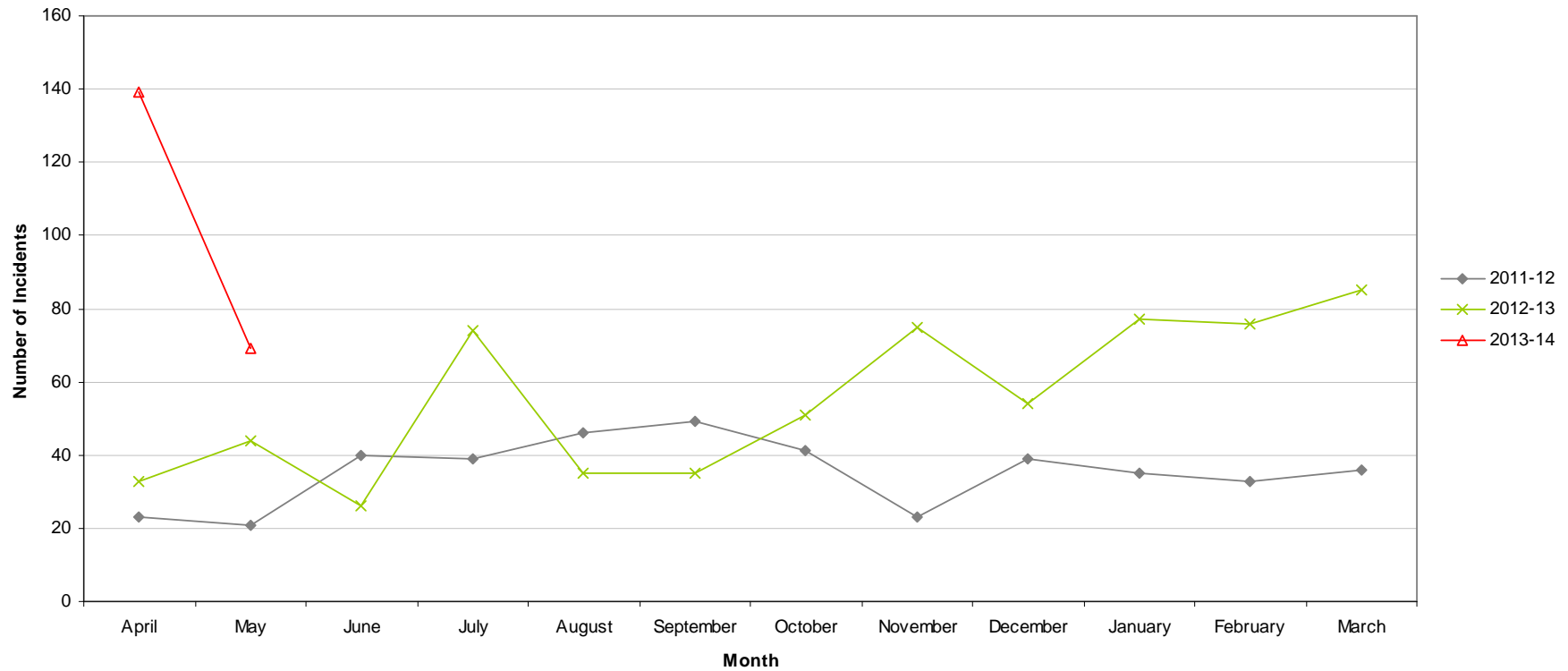


# Fly Tipping

<b>RED</b>	<b>69 incidents</b>	<b>Increase of 25</b>
<b>AMBER</b>		
<b>GREEN</b>		

- All data refers to a comparison with the previous year’s month
- It is proposed that performance over time graphs be used for each indicator
- Historic data for comparison is not available for dog fouling

Incidents of Fly Tipping - Radford & Park

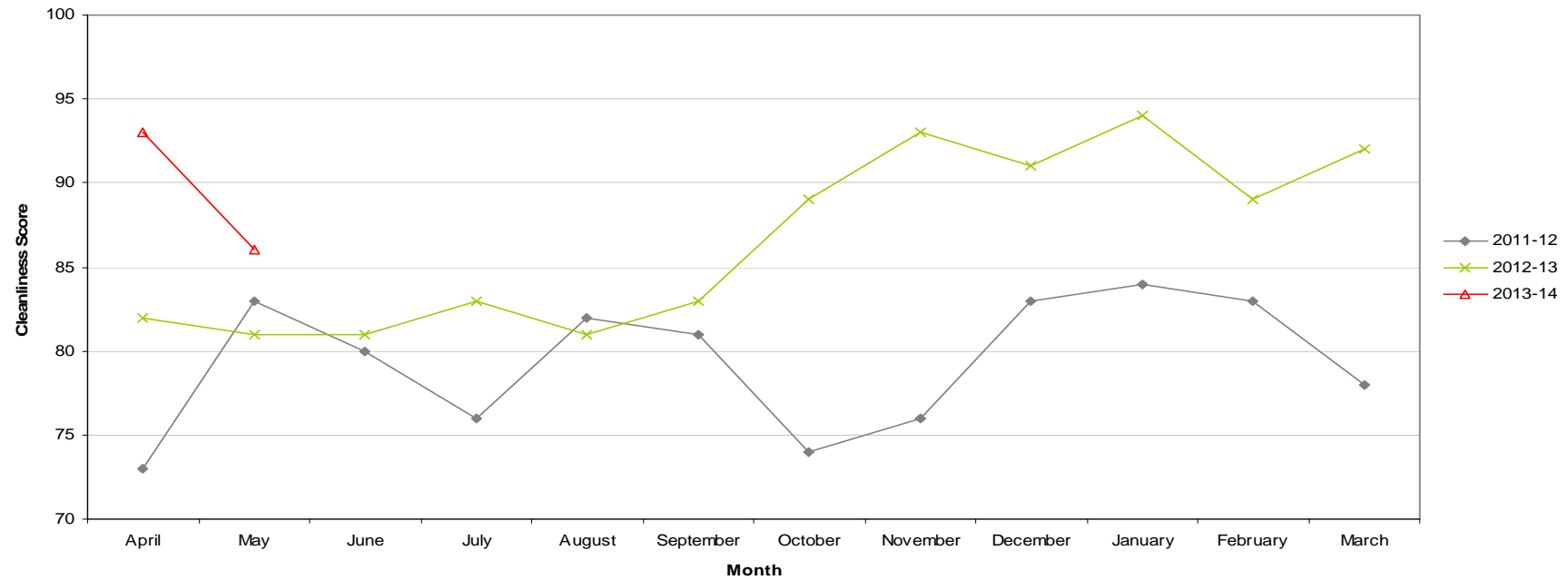


# Cleanliness Index

Cleanliness Index Score	<b>86</b>
Performance compared to previous year	↗
Performance compared to neighbourhoods target of 86	→

- All data refers to a comparison with the previous year's month
- It is proposed that performance over time graphs be used for each indicator
- Historic data for comparison is not available for dog fouling

Cleanliness Index - Radford & Park



# Unemployment Rate

Unemployment in City wards, April 2013

Area	Apr-13			Change in last month		Change in last year	
	Number	Rate	City Rank	Number	%	Number	%
Arboretum	859	7.3	8	18	2.1	2	0.2
Aspley	1,222	10.8	1	1	0.1	6	0.5
Basford	740	6.7	9	-9	-1.2	-6	-0.8
Berridge	1081	7.4	7	-14	-1.3	-2	-0.2
Bestwood	1032	9.1	4	-25	-2.4	-39	-3.6
Bilborough	809	7.7	6	-16	-1.9	-11	-1.3
Bridge	668	6.4	10	-18	-2.6	-114	-14.6
Bulwell	1,122	10.3	2	-25	-2.2	42	3.9
Bulwell Forest	446	4.9	14	4	0.9	-31	-6.5
Clifton North	427	4.8	16	-5	-1.2	5	1.2
Clifton South	515	5.9	12	-12	-2.3	-21	-3.9
Dales	918	7.9	5	9	1	21	2.3
Dunkirk and Lenton	236	2.2	19	-2	-0.8	-50	-17.5
Leen Valley	343	4.9	14	-7	-2	0	0
Mapperley	704	6.3	11	-9	-1.3	-58	-7.6
Radford and Park	779	4.1	17	-4	-0.5	-17	-2.1
Sherwood	584	5.4	13	-12	-2	-65	-10
St Ann's	1281	9.3	3	-34	-2.6	-11	-0.9
Wollaton East and Lenton Abbey	153	1.5	20	0	0	1	0.7
Wollaton West	235	2.6	18	-17	-6.7	-12	-4.9

Source: ONS claimant count April 2013 (from Nomis)

*This is an edited version of a report produced by: Geoff Oxendale, Information and Research Officer, Nottingham City Council. Claimant count of Job Seekers Allowance (JSA) is used as a proxy measure for unemployment.*

*Wards are ranked from 1 (highest Rate, per 1000 of population, of JSA claimants) to 20 (lowest Rate).*



# Housing

## Radford and Park Ward - Housing



### Anti-social behaviour - Hyson Green (Radford and Park Ward)

Indicator	Current Target	2010/11	2011/12	2012/13		
		Value	Value	Value	Status	Trend
% of ASB cases resolved - Hyson Green	97.6%	100%	97.53%	100%		
% of ASB cases resolved by first intervention - Hyson Green	75%	-	-	78.92%		n/a

### Empty properties - Radford and Park Ward

Indicator	Current Target	2010/11	2011/12	2012/13		
		Value	Value	Value	Status	Trend
Average void re-let time for Radford & Park Ward (calendar days)	26	24.34	23.81	29.62		
Number of lettable voids Radford & Park Ward	-	4	7	19		
Number of empty properties awaiting decommission in Radford & Park Ward	-	131	112	79		

### Estate star ratings (from Tenant Service Inspectors)







Indicator	2010/11		2011/12		2012/13		
	Value	Status	Value	Status	Value	Status	Trend
Estate star rating – Hyson Green	2 Star		3 Star		3 Star		

# Housing

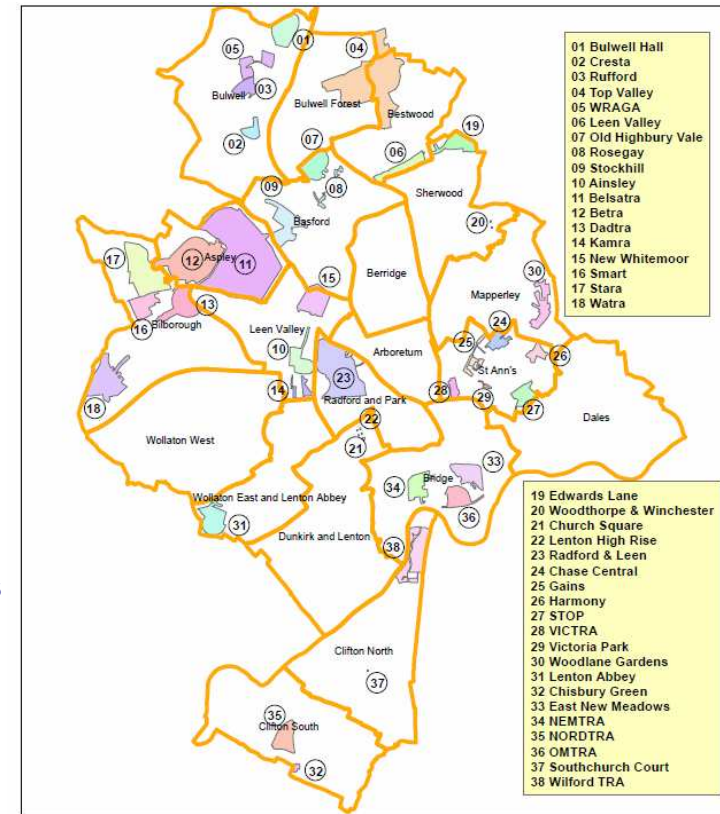
## Rent Collection - Hyson Green

Indicator	Current Target	2010/11	2011/12	2012/13		
		Value	Value	Value	Status	Trend
Rent charged that has been collected - Hyson Green	100.2%	100.7%	101.2%	100.5%	✓	↑

### Key:

-  Performance on or exceeding target
-  Performance below target
-  Data only performance indicator
-  Performance has improved compared to two years ago
-  Performance has deteriorated compared to two years ago
-  Performance unchanged

Map of Tenants and Residents Associations by Ward



Data prepared by Nottingham City Homes Performance Team

For more information please contact Tricia Quinn, Performance Review Manager on 0115 9157365 or Marcus Parton, Performance Review Officer 0115 915715

# Housing

## Performance indicator definitions

Performance indicator	Definition
% of ASB cases resolved	This performance indicator monitors the proportion of ASB cases that Nottingham City Homes has successfully resolved. Data for this indicator is not available by ward and is reported by Housing Office.
% of ASB cases resolved by first intervention	This performance indicator monitors how many ASB cases Nottingham City Homes resolved on the first intervention e.g. written warning. Data for this indicator is not available by ward and is reported by Housing Office.
Average void re-let time (calendar days)	This performance indicator monitors how many empty properties Nottingham City Homes has re-let and the length of time it has taken. The void period is the number of calendar days including the day after the old tenancy ends right through to and including the day before the new tenancy starts.
Number of lettable voids	This performance indicator monitors the number of empty properties which are available for re-letting. Lettable empty properties are those which will receive repair work and then be let to a new tenant.
Number of empty properties awaiting decommission	This performance indicator monitors the number of empty properties which will not be re-let and includes those being decommissioned and / or demolished.
Estate star ratings	Nottingham City Homes Tenant Inspectors monitor the condition of estates and rates them according to a zero, one, two and three star standard. The estates are monitored every three months with a selection of streets (determined by tenants) covering all 42 estates.
Rent charged that has been collected	This performance indicator measures the amount of rent collected (including tenant arrears) as a percentage of rent due for the current year. Data for this indicator is not available by ward and is reported by Housing Office.

# Community Protection

In May 2013 there were five court outcomes in Radford and Park ward. These comprised:

- Tenancy terminated or abandoned by perpetrator following legal action by Community Protection for Drugs;
- Three Statutory Notices for Environment; and
- A Caution for Environment.

*Data has been received from Community Protection and where postcodes have been listed these have been geo-coded and mapped to determine the Ward. All addresses relate to the address of the Perpetrator.*

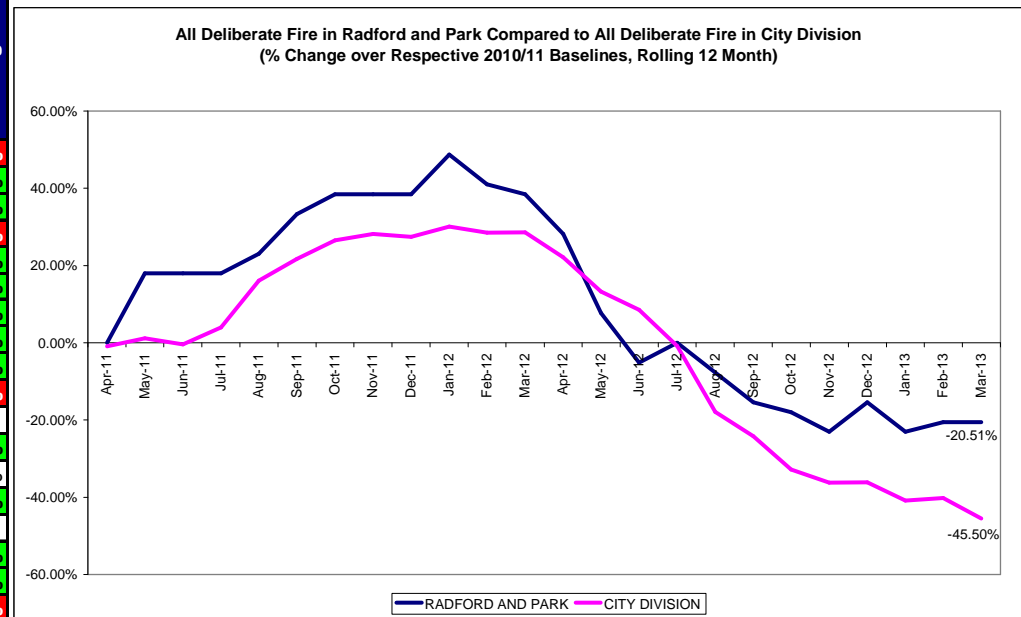
*FPNs are not currently available at ward level.*

*For enquiries regarding Community Protection court outcomes please contact the Operational Manager for the locality.*

# Fire

**Table: Volume of Deliberate Primary and Secondary Fires by Ward**

Ward	Apr-12	Apr-13	Change	% Change	Previous YTD	YTD	Change	% Change
Arboretum	0	3	3		1	4	3	300.00%
Aspley	1	6	5	500.00%	13	12	-1	-7.69%
Basford	8	2	-6	-75.00%	17	5	-12	-70.59%
Berridge	2	4	2	100.00%	3	6	3	100.00%
Bestwood	6	8	2	33.33%	11	10	-1	-9.09%
Bilborough	10	2	-8	-80.00%	16	5	-11	-68.75%
Bridge	1	2	1	100.00%	13	2	-11	-84.62%
Bulwell	9	4	-5	-55.56%	22	7	-15	-68.18%
Bulwell Forest	3	3	0	0.00%	10	4	-6	-60.00%
Clifton North	1	3	2	200.00%	5	6	1	20.00%
Clifton South	0	4	4		0	10	10	
Dales	0	4	4		7	6	-1	-14.29%
Dunkirk and Lenton	0	1	1		1	1	0	0.00%
Leen Valley	4	6	2	50.00%	7	6	-1	-14.29%
Mapperley	0	4	4		0	5	5	
Radford and Park	1	0	-1	-100.00%	2	1	-1	-50.00%
Sherwood	0	0	0		3	1	-2	-66.67%
St. Ann's	2	7	5	250.00%	4	7	3	75.00%
Wollaton East and Lenton Abbey	1	1	0	0.00%	1	1	0	0.00%
Wollaton West	0	2	2		1	2	1	100.00%
<b>Total</b>	<b>49</b>	<b>66</b>	<b>17</b>	<b>34.69%</b>	<b>137</b>	<b>101</b>	<b>-36</b>	<b>-26.28%</b>



- The above table shows volume of deliberate (primary and secondary) fires in the 20 wards. In April 2013 there were not any fires in Radford and Park ward. Year to date deliberate fires in the ward are down by 1 (50%).
- The graph on the right shows a *rolling* 12 month total of deliberate fires in Radford and Park against the *fixed* 2010/11 baseline. The performance of the City Division against *its* baseline has also been shown for comparison purposes.

# Methodology

Data has not been audited or verified and therefore must only be used as a reflection of crime.

Crime data and ASB calls have been extracted from the Police systems and mapped to ascertain which Ward they occurred in.

Where a ward boundary overlaps with the City Centre, crime data and ASB calls relating to the City Centre have been removed.

Where possible the most recent data is used, although for some areas this may be a month further in arrears.

Discussions continue with other agencies regarding what further data can be included.